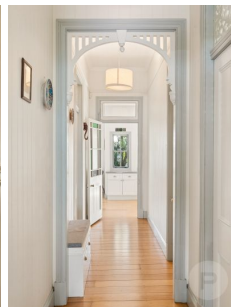
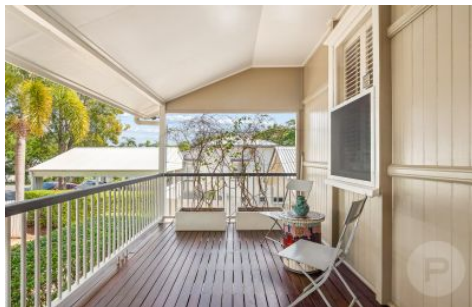


Place.



### 25 Lovekin Street Ashgrove QLD

4 3 2

Proudly positioned on an elevated 810m<sup>2</sup> allotment with a prized north-east aspect, this beautifully restored Queenslander occupies a blue-chip parcel in one of Ashgrove's most prestigious, tree-lined streets. Framed by manicured hedging and a timeless white picket fence, the residence dates back to the early 1900s as one of the suburb's original homes.

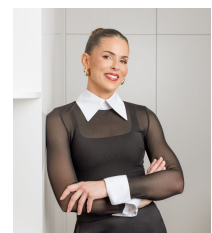
Rich in character, the home showcases 3.2-metre ceilings, polished timber floors, VJ walls, leadlight windows and intricate fretwork, all thoughtfully restored to honour its heritage. Across two expansive levels, it delivers a refined balance of light-filled contemporary living and classic architectural elegance-defining a timeless family residence in one of Brisbane's most sought-after enclaves.

[For full version visit the website](https://www.placeproperty.com.au/sale/qld/city-north/ashgrove/residential/house/8681026)

**Type** : House  
**Price** : Auction Saturday 16 May 11am On-Site  
**Land Size** : 810 sqm  
**View** : <https://www.placeproperty.com.au/sale/qld/city-north/ashgrove/residential/house/8681026>



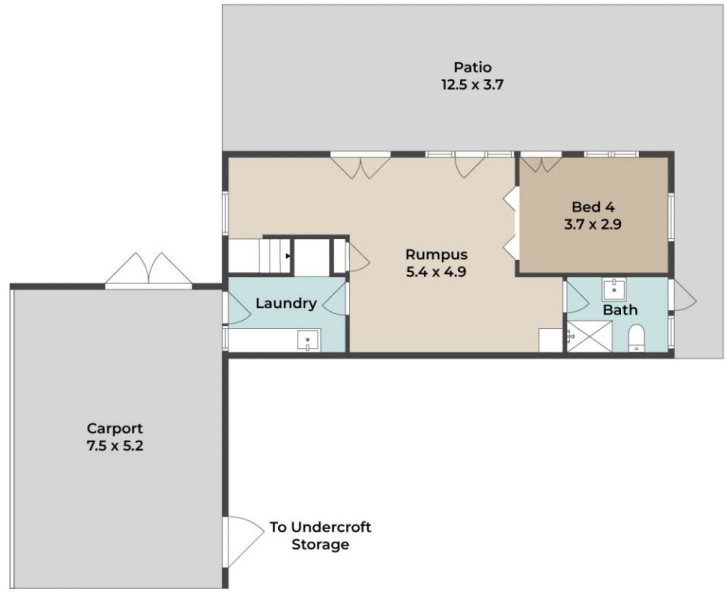
**Andrew Degn**  
07 3858 0330



**Sam Degn**  
07 3858 0388



Upper Floor



Lower Floor

Approx. Floor Area | Internal 196 m<sup>2</sup>

Unless otherwise stated, all dimensions are in metres. Stair arrows indicate the upward direction. This plan and information contained within is for illustrative purposes only and not guaranteed to be exact. Interested parties should make their own enquiries.

