

Place.



17 Bayswater Street Paddington QLD

4 2 5

Located in the vibrant suburb of Rosalie, this family home is on the market for the first time in over 20 years. Meticulously renovated in 2016 by renowned architect Matt Kennedy of Arcke, the "Rosalie Plinth House" emanates a resort-like vibe, just 10 minutes from the city.

Land Size : 405 sqm
View : <https://www.placeproperty.com.au/sale/qld/city-north/paddington/residential/house/7658002>

The heritage of the original and charming cottage continues to be honoured while the extension has infused the house with modern design elements to create a home that seamlessly blends indoor and outdoor living.

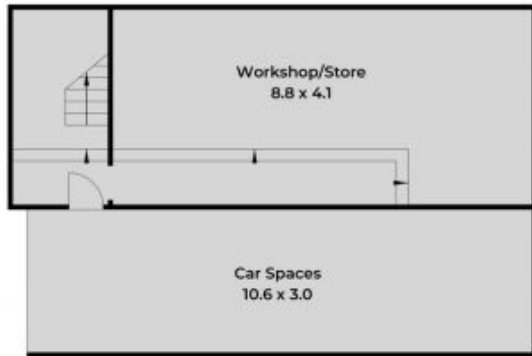


Andrew Degn
07 3858 0330

The magic lies in the creation of a captivating garden level, raised two meters above the ground at the rear of the block. By elevating the cottage and adding a two-level extension, Arcke achieved a perfect fusion of contemporary design and timeless elegance. Picture yourself relaxing in the inviting living areas that effortlessly flow onto an



Level 2



Level 1



Level 3

Approx. Floor Area | Internal 158 m² | External 122 m² | Total 280 m²

Unless otherwise stated, all dimensions are in metres. Stair arrows indicate the upward direction. This plan and information contained within it is for illustrative purposes only and not guaranteed to be exact. Interested parties should make their own enquiries.

