

Place.



55 Lorward Avenue Bardon QLD

4 3 2

Nestled amongst the trees and an abundance of birds and wildlife on a rare 1,113m2 block. Exuding privacy, this charming traditional Queenslander provides the most idyllic sanctuary for families or nature lovers. Situated along the banks of Ithaca creek, and on a quiet, neighbourly street close to local schools, parks, and cafes, this home offers a peaceful and secluded suburban lifestyle, whilst only a short drive to the CBD. The home is being offered for the first time in 25 years!

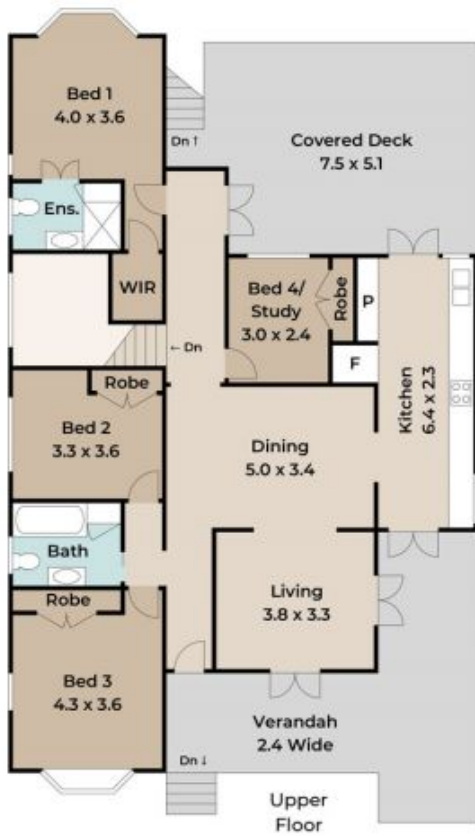
Greeted by a generous front yard ideal for young children and pets, this gorgeous home invites you in through a wraparound front verandah finished with French doors. Adorned with beautiful character features including a leadlight front door, pressed metal ceilings and a Federation pedestal arch in the dining and lounge room, wide hoop pine floors, hopscotch casement windows and

Land Size : 1113 sqm

View : <https://www.placeproperty.com.au/sale/qld/city-north/bardon/residential/house/7240473>



Jesse Sherring
07 3858 0388



Approx. Floor Area | Internal 212 m² | External 220 m² | Total 432 m²

Unless otherwise stated, all dimensions are in metres. Star arrows indicate the upward direction. This plan and information contained within is for illustrative purposes only and not guaranteed to be exact. Interested parties should make their own enquiries.

