

Place.



41 Tooth Avenue Paddington QLD

4 2 1

Boasting a quiet, elevated position in Paddington and surrounded by some of Brisbane's best homes a golden opportunity awaits for the astute buyer or savvy investor. Offering beautiful, polished timber floors, open plan living plus stunning city and district views this your chance to secure a prime piece of inner-city real estate.

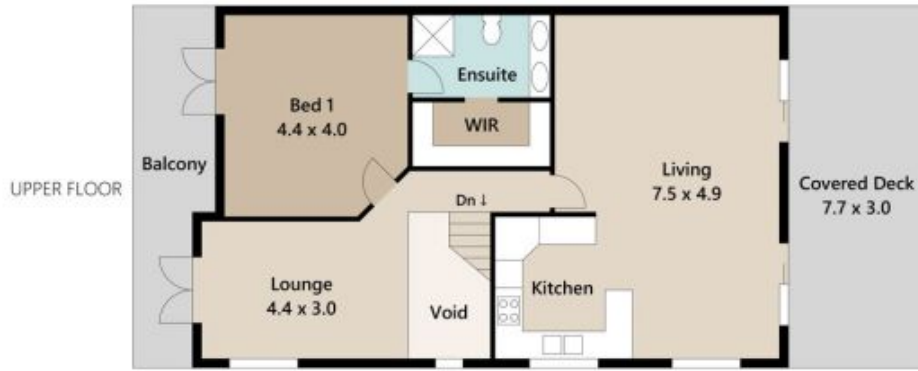
- *Bright, light-filled open plan living and dining seamlessly flow onto the back deck
- *Generous undercover deck provides a leafy outlook and sweeping district views
- *The kitchen has great bones and offers ample storage and bench space
- *A separate living room upstairs opens out the front balcony with captivating city views
- *Master bedroom opens out to the front balcony and offers a private ensuite plus walk-in robe

Building Size : 201 sqm
Land Size : 374 sqm
View : <https://www.placeproperty.com.au/sale/qld/city-north/paddington/residential/house/7172439>



Andrew Degn
07 3858 0330

<https://www.placeproperty.com.au>



Approx. Floor Area | Internal 204 m² | External 56 m² | Total 260 m²

UNLESS OTHERWISE STATED, ALL DIMENSIONS ARE IN METRES. THIS PLAN AND INFORMATION CONTAINED WITHIN IS FOR ILLUSTRATIVE PURPOSES ONLY AND NOT GUARANTEED TO BE EXACT. INTERESTED PARTIES SHOULD MAKE THEIR OWN ENQUIRIES.

