



28 Latrobe Terrace Paddington QLD

2 🏠 2 🚗

This property offers a rare opportunity in the tightly held and sought-after suburb of Paddington to obtain a freestanding character shopfront with commercial applications, along with established comfortable residential living.

Land Size : 405 sqm

View : <https://www.placeproperty.com.au/sale/qld/city-north/paddington/residential/house/6949249>

*Two levels of operating office and studio space plus residential space on the lower level

*Separate storefront attached to the side of the building

* The lower level has a large wrap around verandah which offers blistering Mt Cootha and district views

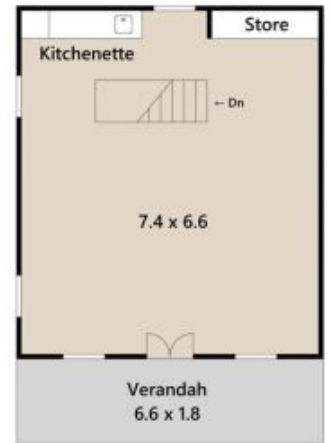
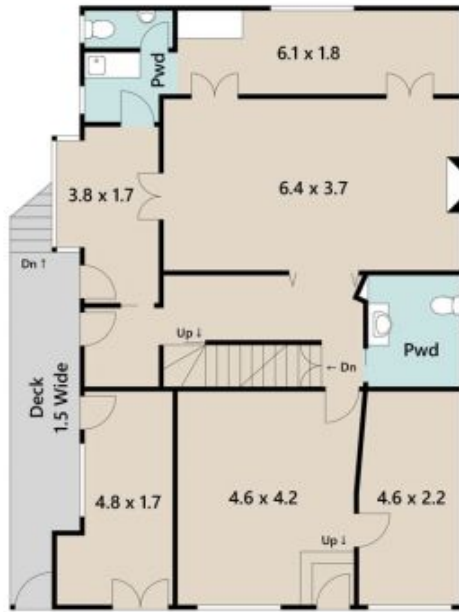
*The bright kitchen offers ample storage and bench space

*Spacious high ceilings and light filled interiors adorned with original features and polished timber floors on top and middle floor with air-conditioning throughout

*Secluded fenced backyard with room for expansion (STCA)



Andrew Degn
07 3858 0330



Approx. Floor Area | Internal 252 m² | External 59 m² | Total 311 m²

UNLESS OTHERWISE STATED, ALL DIMENSIONS ARE IN METRES. THIS PLAN AND INFORMATION CONTAINED WITHIN IS FOR ILLUSTRATIVE PURPOSES ONLY AND NOT GUARANTEED TO BE EXACT. INTERESTED PARTIES SHOULD MAKE THEIR OWN ENQUIRIES.

