

Place.



## 120 Stanley Terrace Taringa QLD

6 4

Sitting on an elevated 680sqm block, this Queenslander comprises of 4 boutique units featuring 6 bedrooms and a potential return of \$1,090 p/week, this property is perfect for the savvy buyer or investor looking to add to their property portfolio.

**Land Size** : 680 sqm  
**View** : <https://www.placeproperty.com.au/sale/qld/city-north/taringa/residential/block-of-units/6841092>

- \*Two front units are part of the original Queenslander and offer two bedrooms
- \*Two units on the lower level offer one bedroom with access to the backyard
- \*The wrap-around front verandah overlooks the paved courtyard
- \*The spacious backyard provides cool summer breezes and district views

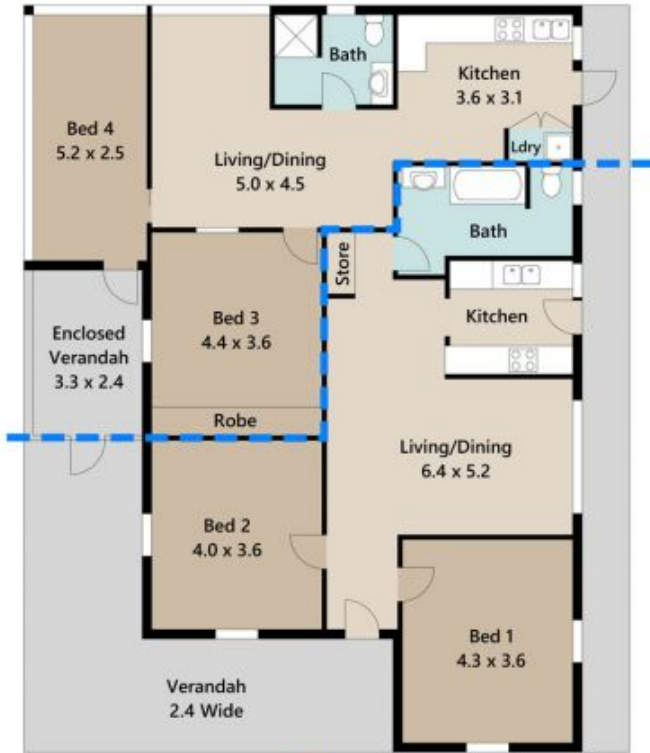


**Andrew Degn**  
07 3858 0330

Sitting in a great location this property is within walking distance of Taringa Train Station plus an array of boutique,

<https://www.placeproperty.com.au>

Unit 2



Unit 1

UPPER FLOOR

Approx. Floor Area | Internal 245 m<sup>2</sup> | External 80 m<sup>2</sup> | Total 325 m<sup>2</sup>

UNLESS OTHERWISE STATED, ALL DIMENSIONS ARE IN METRES. THIS PLAN AND INFORMATION CONTAINED WITHIN IS FOR ILLUSTRATIVE PURPOSES ONLY AND NOT GUARANTEED TO BE EXACT. INTERESTED PARTIES SHOULD MAKE THEIR OWN ENQUIRIES.

Unit 4

Unit 3



LOWER FLOOR

