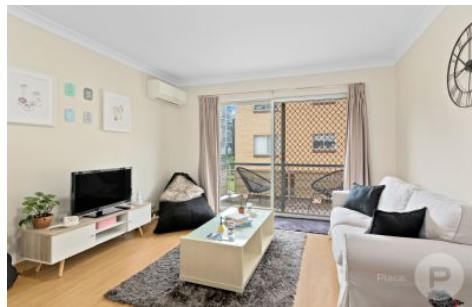


Place.



121 Chalk Street Lutwyche QLD

8 4 4

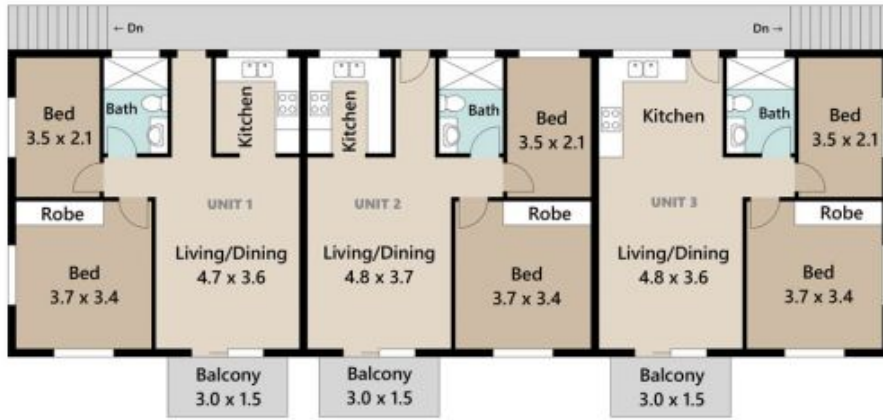
Situated in the heart of Lutwyche, this tightly held boutique complex has become available for the first time in over 30 years. Comprising of 4-units, this property is perfectly located with the Lutwyche Shopping District across the street. This property is a 3 minute walk from the Lutwyche Busway as well as an easy 10-minute walk to the Woolloowin station.

- *The first floor units offer open plan living and dining which opens on to a private balcony
- *Newly updated kitchens offer ample storage and bench space
- *All units offer two bedrooms with built-in robes serviced by a well-sized bathroom
- *Each unit also features air-conditioning and a single car lockup garage with laundry facilities

Land Size : 615 sqm
View : <https://www.placeproperty.com.au/sale/qld/city-north/lutwyche/residential/block-of-units/6779059>



Andrew Degn
07 3858 0330



UPPER FLOOR



LOWER FLOOR

Approx. Unit Areas | Internal 52 m² | Balcony 5 m² | Garage 25 m² | Total 82 m²

UNLESS OTHERWISE STATED, ALL DIMENSIONS ARE IN METRES. THIS PLAN AND INFORMATION CONTAINED WITHIN IS FOR ILLUSTRATIVE PURPOSES ONLY AND NOT GUARANTEED TO BE EXACT. INTERESTED PARTIES SHOULD MAKE THEIR OWN ENQUIRIES.

