

Place.



13 Gregory Street Taringa QLD

3 3 2

Sitting in an elevated position with a leafy outlook, this large home is draped in natural light plus the warm timber flooring and neutral tones throughout provide a tranquil space to live in. Ideally located within a quiet pocket of Taringa this home is a fantastic opportunity for the savvy buyer, renovator or investor.

Land Size : 491 sqm

View : <https://www.placeproperty.com.au/sale/qld/city-north/taringa/residential/house/6597945>

*Open plan kitchen, living and dining flows out to the wrap-around verandah

*Contemporary kitchen offers a servery window, ample storage and a walk-in pantry

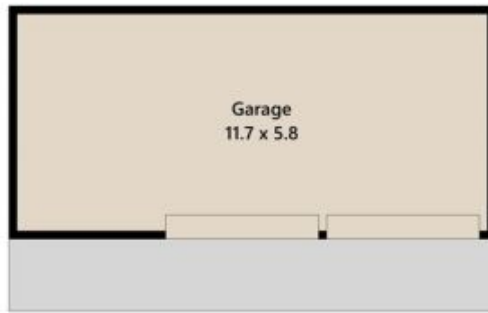
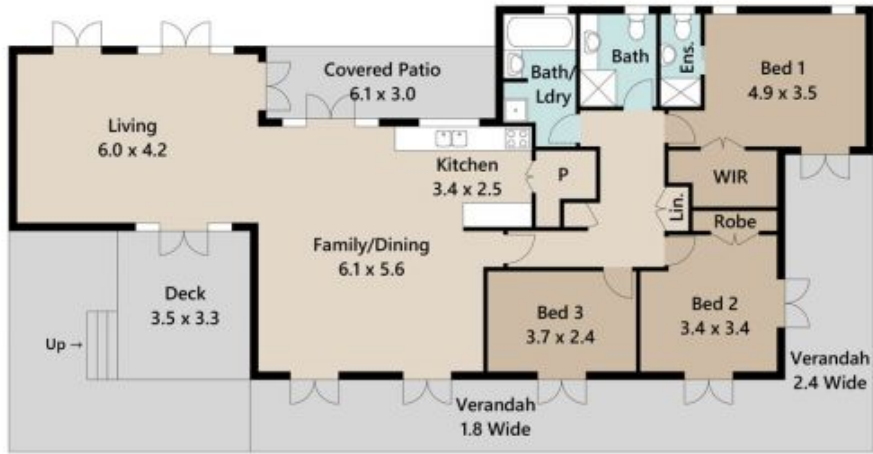
*The separate light-filled family room opens out to the rear courtyard

*The large verandah captures the summer breeze and provides a leafy outlook

*Master bedroom offers walk-in robe, ensuite and private access via the verandah



Andrew Degn
07 3858 0330



Approx. Floor Area | Internal 213 m² | External 105 m² | Total 318 m²

UNLESS OTHERWISE STATED, ALL DIMENSIONS ARE IN METRES. THIS PLAN AND INFORMATION CONTAINED WITHIN IS FOR ILLUSTRATIVE PURPOSES ONLY AND NOT GUARANTEED TO BE EXACT. INTERESTED PARTIES SHOULD MAKE THEIR OWN ENQUIRIES.

