

Place.



### 53 Lorward Avenue Bardon QLD

4 3 2

There is more than meets the eye to this impressive home. As you walk down the lush, tree lined walkway towards the front door you can feel how special this home really is. Upon entering you are instantly welcomed to a quintessential subtropical Queensland retreat, designed by John Mainwaring. The home takes full advantage of its secluded setting and the exclusive leafy surrounds. This is a rare offering for one lucky buyer.

High ceilings and clerestory windows throughout make the spacious interior light and bright with breath-taking aspects of native bushland from every angle.

The modern kitchen is sleek and stylish with a dramatic island bench with leather finished Carrara white and lava stone tops providing the perfect backdrop for an elegant soir e. The kitchen has everything the modern chef

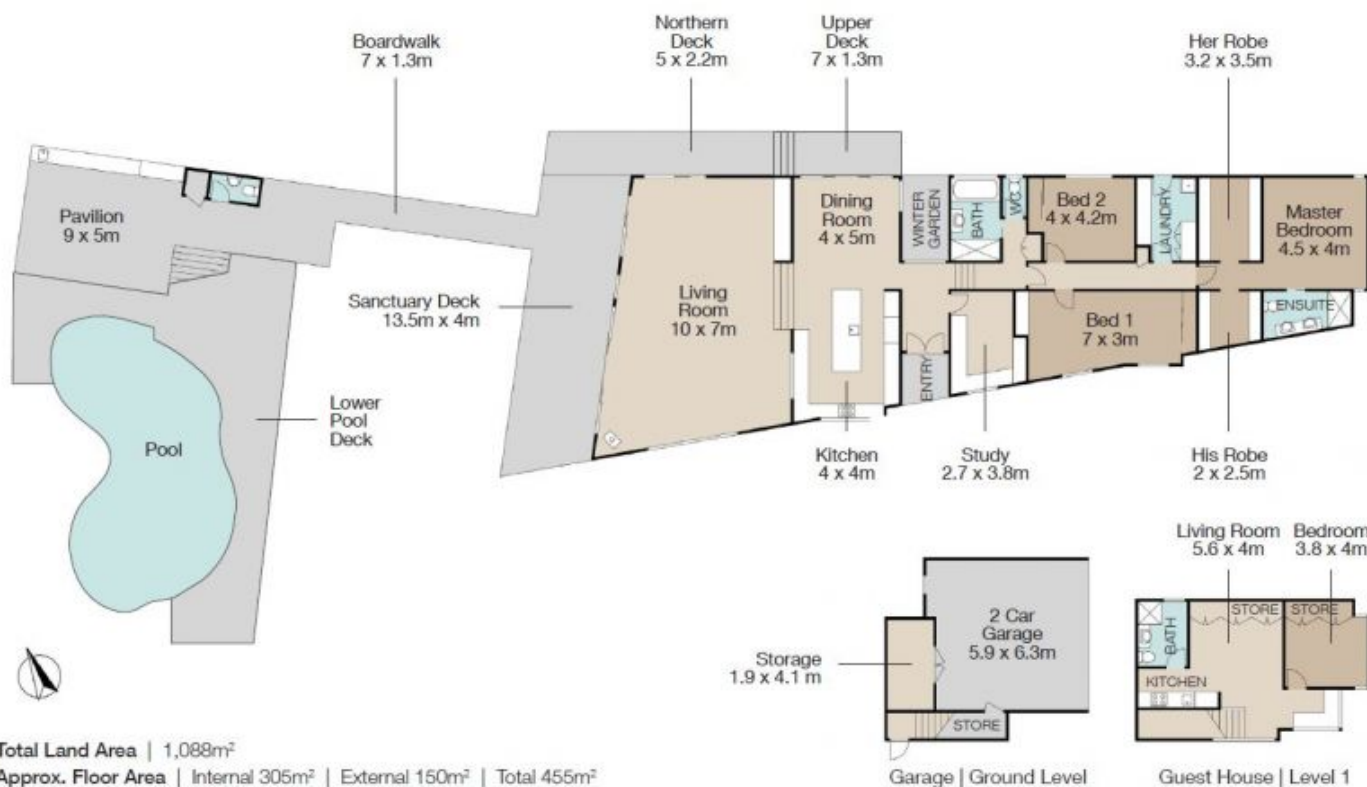
**Land Size** : 1088 sqm

**View** : <https://www.placeproperty.com.au/sale/qld/city-north/bardon/residential/house/6551631>



**Andrew Degn**  
07 3858 0330

BARDON  
53 LORWARD AVENUE



Total Land Area | 1,088m<sup>2</sup>

Approx. Floor Area | Internal 305m<sup>2</sup> | External 150m<sup>2</sup> | Total 455m<sup>2</sup>

UNLESS OTHERWISE STATED, ALL DIMENSIONS ARE IN METRES. THIS PLAN AND INFORMATION CONTAINED WITHIN IS FOR ILLUSTRATIVE PURPOSES ONLY AND NOT GUARANTEED TO BE EXACT. INTERESTED PARTIES SHOULD MAKE THEIR OWN ENQUIRIES.