



### 55 Hawthorn Terrace Red Hill QLD

5 🏠 3 🚿 2 🚗

Adjacent to the Woolcock Park precinct in a sought-after street, this eye-catching family home sits across two levels and provides the ultimate Queensland lifestyle. Charming character features effortlessly blend with modern elements to create a stunning entertainer's paradise.

**Land Size** : 543 sqm

**View** : <https://www.placeproperty.com.au/sale/qld/city-north/red-hill/residential/house/6551354>

\*Large front verandah captures leafy district views and the cool summer breezes

\*Open plan living and dining room with 3.1m high ceilings throughout the first floor

\*The oversized back deck overlooks the parklands and offers remote control blinds for year round comfort

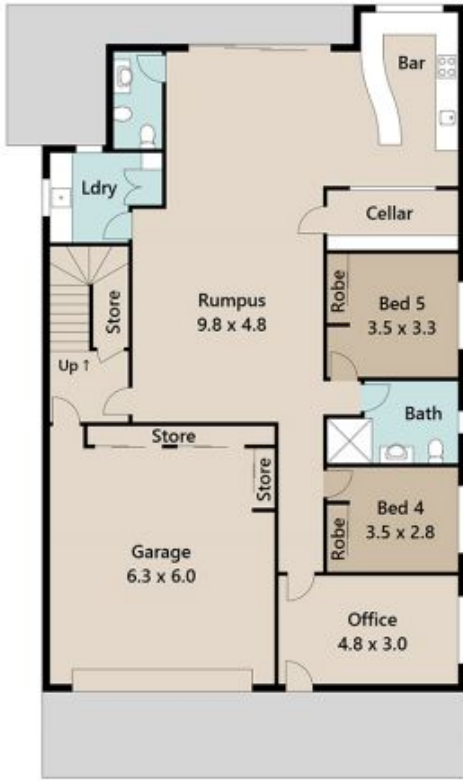
\*Modern kitchen with ample storage space plus large island with additional seating

\*Spacious master suite with private ensuite and large walk-in robe

\*Two additional bedrooms on the upper level plus a further



**Andrew Degn**  
07 3858 0330



LOWER FLOOR



UPPER FLOOR

Approx. Floor Area | Internal 328 m<sup>2</sup> | External 154 m<sup>2</sup> | Total 482 m<sup>2</sup>

UNLESS OTHERWISE STATED, ALL DIMENSIONS ARE IN METRES. THIS PLAN AND INFORMATION CONTAINED WITHIN IS FOR ILLUSTRATIVE PURPOSES ONLY AND NOT GUARANTEED TO BE EXACT. INTERESTED PARTIES SHOULD MAKE THEIR OWN ENQUIRIES.

