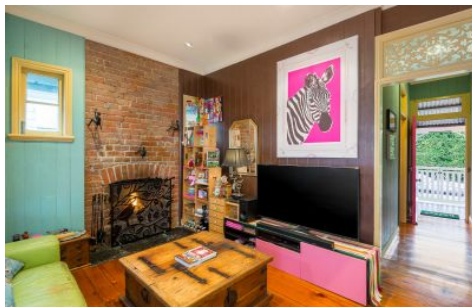


Place.



## 20 Thomas Street Auchenflower QLD

2 1 1

Beyond a pink door facade, this unique artistic cottage welcomes you to two levels.

Secretly offering striking views of Brisbane's city skyline to the rear. North facing at the front, the home has beautiful breezes and sunlight movement throughout the day.

This prized location c1910 charming rare cottages light-filled dimensions deliver immediate lifestyle now. Also, an envisaged renovation, or investment appeal. Timber floors and high ceilings, lead to an open plan living room warmed by an original exposed brick fireplace. The light filled dining area opens to a huge entertaining rear deck.

The bottom level has ample lock up storage. As well as two separate rooms perfect for hobbyists and currently used as a home office.

**Land Size** : 352 sqm  
**View** : <https://www.placeproperty.com.au/sale/qld/city-north/auchenflower/residential/house/6529619>



**Andrew Degn**  
07 3858 0330



UPPER FLOOR



LOWER FLOOR

Approx. Floor Area | Internal 110 m<sup>2</sup> | External 102 m<sup>2</sup> | Total 212 m<sup>2</sup>

UNLESS OTHERWISE STATED, ALL DIMENSIONS ARE IN METRES. THIS PLAN AND INFORMATION CONTAINED WITHIN IS FOR ILLUSTRATIVE PURPOSES ONLY AND NOT GUARANTEED TO BE EXACT. INTERESTED PARTIES SHOULD MAKE THEIR OWN ENQUIRIES.

