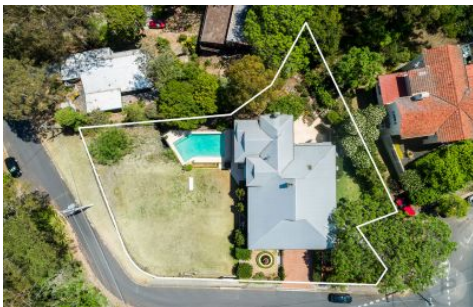


Place.



96 Simpsons Road Bardon QLD

6 3 3

Situated in the prestigious locale of Bardon you will find this exceptionally restored Queenslander. From the moment you step through the iron gates you are greeted by a striking entryway surrounded by beautifully manicured gardens leading you to the spacious front verandah.

Walking through the front door you will be immediately taken by the traditional features such as the VJ walls, beautiful timber floors, pressed ceilings and stunning light fixtures.

Heading into the main living area you will find an open plan formal living and dining room are adorned with sparkling chandeliers, natural light plus an original working fireplace. Each room is lined with doors which flow out to the wrap around deck creating the perfect space to entertain.

Land Size : 1837 sqm

View : <https://www.placeproperty.com.au/sale/qld/city-north/bardon/residential/house/6473710>



Andrew Degn
07 3858 0330



UPPER FLOOR



LOWER FLOOR

Approx. Floor Area | Internal 460 m² | External 225 m² | Total 685 m²

UNLESS OTHERWISE STATED, ALL DIMENSIONS ARE IN METRES. THIS PLAN AND INFORMATION CONTAINED WITHIN IS FOR ILLUSTRATIVE PURPOSES ONLY AND NOT GUARANTEED TO BE EXACT. INTERESTED PARTIES SHOULD MAKE THEIR OWN ENQUIRIES.

